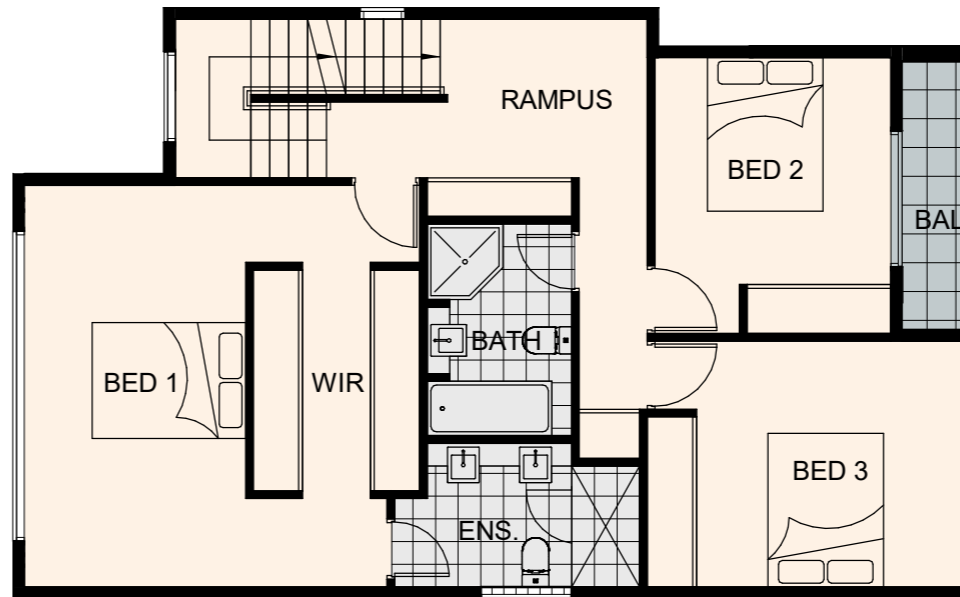
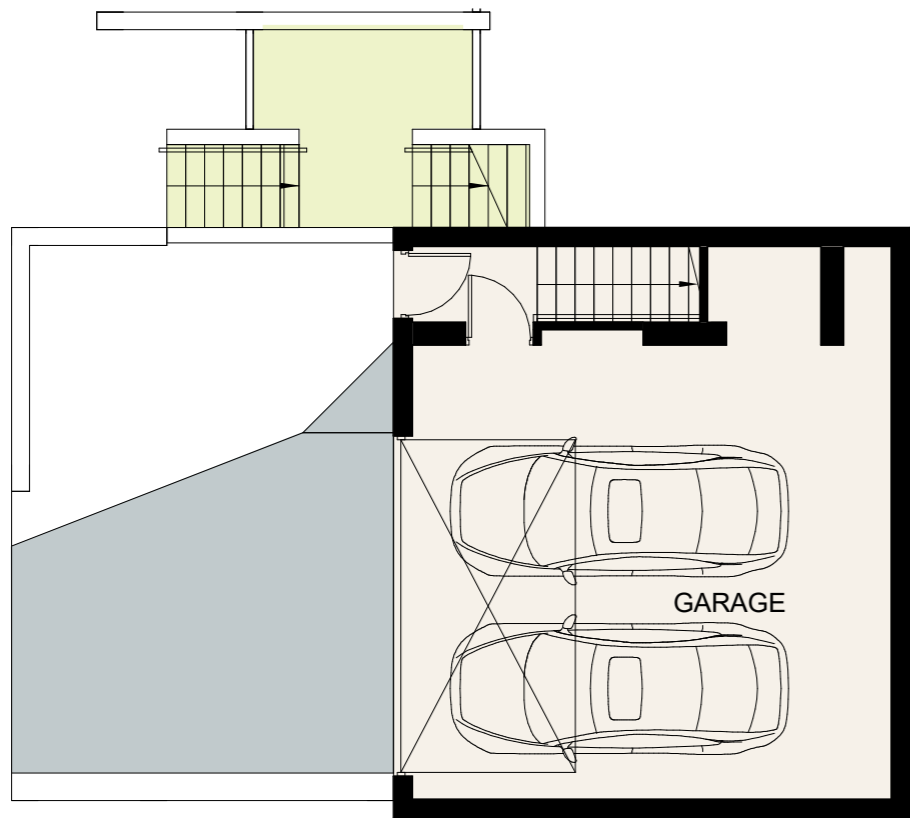


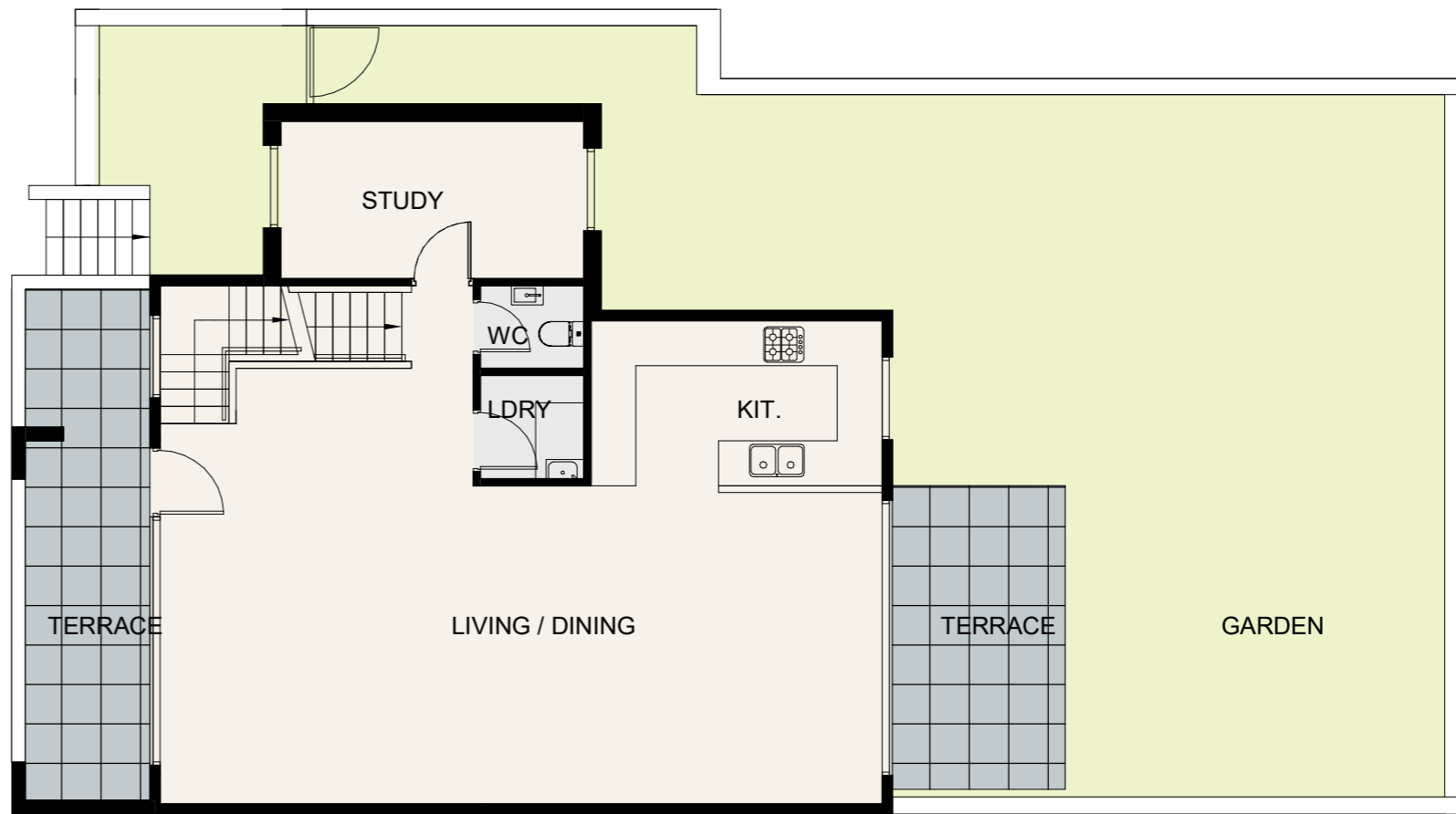
ROOF



FIRST FLOOR



LOWER GROUND FLOOR



GROUND FLOOR



**EVERGREEN**  
**GREEN** 万绿园

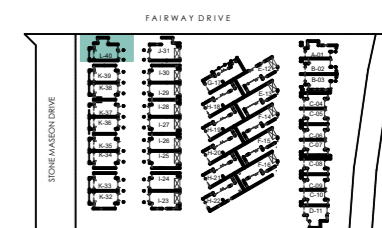
93 WINDSOR ROAD, NORWEST

**TOWNHOUSE 40**



3 2.5 1 2

LAND SIZE	281M <sup>2</sup>
INTERNAL	218M <sup>2</sup>
EXTERNAL	169M <sup>2</sup>



DISCLAIMER: The particulars are set out as a general outline for the guidance of intending purchasers and do not constitute an offer or contract. All descriptions, dimensions, references to conditions and necessary permutations for use and other details are given in good faith and are believed to be correct, but any intending purchasers should not rely on them as statements or representations of fact, but must satisfy themselves by inspection or otherwise to the correctness of each item, and where necessary seek advice. No third party supplier or their agents has any authority to make or give any representations or warranty in relation to this property. Plans are indicative only. Areas are subject to final survey. Completed apartments may vary from the plans shown. All areas should be viewed in consideration with the Final Strata Survey, and should any discrepancies arise, the Final Strata Survey will prevail.

**RayWhite**